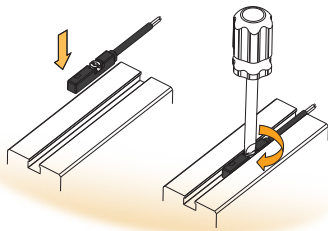


KT-65-EX SERIES



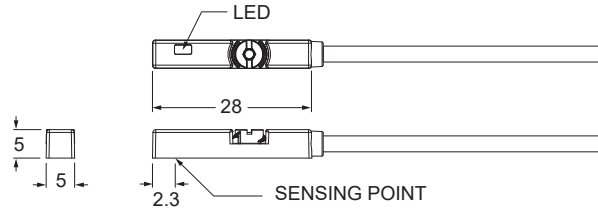
Explosion Proof

Patented

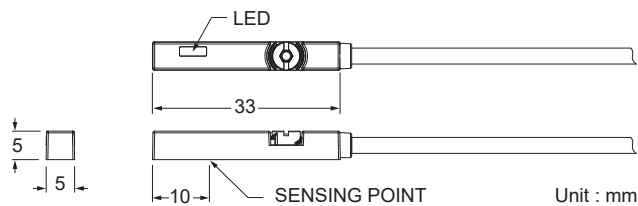


Dimensions

KT-65N-EX, KT-65N-NC-EX, KT-65P-EX, KT-65P-NC-EX, KT-65D-EX



KT-65R-EX, KT-65RP-EX



M8 Connector option is not available

Specifications

MODEL	KT-65R-EX	KT-65D-EX	KT-65N-EX	KT-65N-NC-EX	KT-65P-EX	KT-65P-NC-EX	KT-65RP-EX
Connect Diagram							
Characteristics	2-Wire Type		3-Wire Type				
Wiring Method	2-Wire Type		3-Wire Type				
Switching Logic	SPST, Normally Open	Solid State Output, Normally Open	Solid State Output, Normally Close		Solid State Output, Normally Open	Solid State Output, Normally Close	SPST, Normally Open
Sensor Type	Reed Switch	-	NPN Current Sinking		PNP Current Sourcing		Reed Switch
Operating Voltage	5 ~ 30 V DC / AC		10 ~ 28 V DC				10 ~ 30 V DC / AC
Switching Current	100 mA max.	50 mA max.	200 mA max.		500 mA max.		500 mA max.
Contact Rating ※1	10 W max.	1.5 W max.	5.5 W max.		10 W max.		10 W max.
Current Consumption ※2	-		10 mA @ 24 V DC max.				
Voltage Drop ※2	3.0 V max.	3.5 V max.	1.5 V max.		0.1 V @ 100 mA max.		0.1 V @ 100 mA max.
Leakage Current ※2	-	0.8 mA max.	0.05 mA max.		-		-
Indicator	Red LED				Yellow LED		
Lead Wire	Ø2.8 PUR - 26 AWG (0.15 mm ²) - 2 cores		Ø2.8 PUR - 26 AWG (0.15 mm ²) - 3 cores				
Operating Frequency	200 Hz		1000 Hz				200 Hz
Magnet Requirement ※2,3	65 Gauss		50 Gauss				65 Gauss
Temperature Range			-10 ~ 70 °C				
Shock ※4	30 G		50 G				30 G
Vibration ※5			9 G				
Enclosure	IEC 60529 IP67						
Protection Circuit ※6	1	2	2, 3, 4			1	
CE ATEX APPROVAL Baseefa14ATEX0118	Ⓔ II 3 GD Ex ic IIB T4 Gc (-10 °C ≤ Ta ≤ +70 °C) Ex ic IIIC T135 °C Dc (-10 °C ≤ Ta ≤ +70 °C)						

NOTE

※1 : WARNING : Never exceed rating (Watt = Voltage × Amperage). Permanent damage to sensor will occur.

※2 : It bases on conditions of voltage 24 V DC, ambient temp. 25 °C and 2 meters cable of sensor. Voltage drop increases in pace with cable length.

※3 : Measuring standard target : Ø15.5 × Ø8 × 5t (Anisotropy rubber magnet)

※4 : Sin wave / X, Y, Z 3 directions / 3 times each direction / 11 ms each time.

※5 : Double amplitude 1.5 mm / 10 Hz ~ 55 Hz ~ 10 Hz (Sweep 1 min) / X, Y, Z 3 directions / 1 hour each time.

※6 : 1 = None / 2 = Short-circuit / 3 = Power Source Reverse polarity / 4 = Surge Suppression

KT-65 series can be applied to many kind of cylinders

